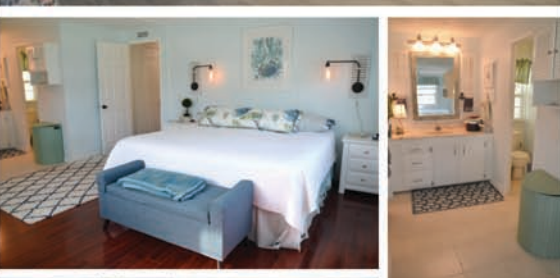


# 406 Jade Circle

For  
**SALE**

**Home size:** 24' x 56'  
**Square Feet:** 1,344  
**Porch/Extra S/F:** 240  
**Year:** 1979  
**Bedrooms:** 2  
**Bathrooms:** 2  
**Furnished:** No  
**Flooring:** Laminate wood, Ceramic tile  
**Laundry:** In Shed  
**Applianc/Equip:** Refridge., range, dishwasher, microwave, washer & dryer  
**Lot Desc:** Lake  
**Lot Size:** 4,345S/F  
**Irrigation Well:** Yes  
**Assoc Fee (Optional):** \$10.00/yr  
**Monthly Lot Rent:** \$717.00  
(includes cable, garbage, & amenities)



## Pinelake Village

A 55+ Manufactured Housing Community



- Lake front home with expansive lake views from all living areas. Updates throughout!
- Beautifully designed large kitchen with huge island to seat all your friends and family! Lots of storage with plentiful cabinets.
- New roof in 2019, new kitchen appliances 2017, air conditioner 2017, electric 2017, windows 2015-16.
- New floors in living areas & master bedroom in 2017

Please visit our website for additional info & pictures [www.PinelakeVillage.com](http://www.PinelakeVillage.com)



Please call to arrange a private viewing **Vicki Mattucci, Sales Agent** 772-201-2685 cell or 772-334-1414 office

